

**UNIT TOTALS**

TOTAL = 153

**PARKING TOTALS**

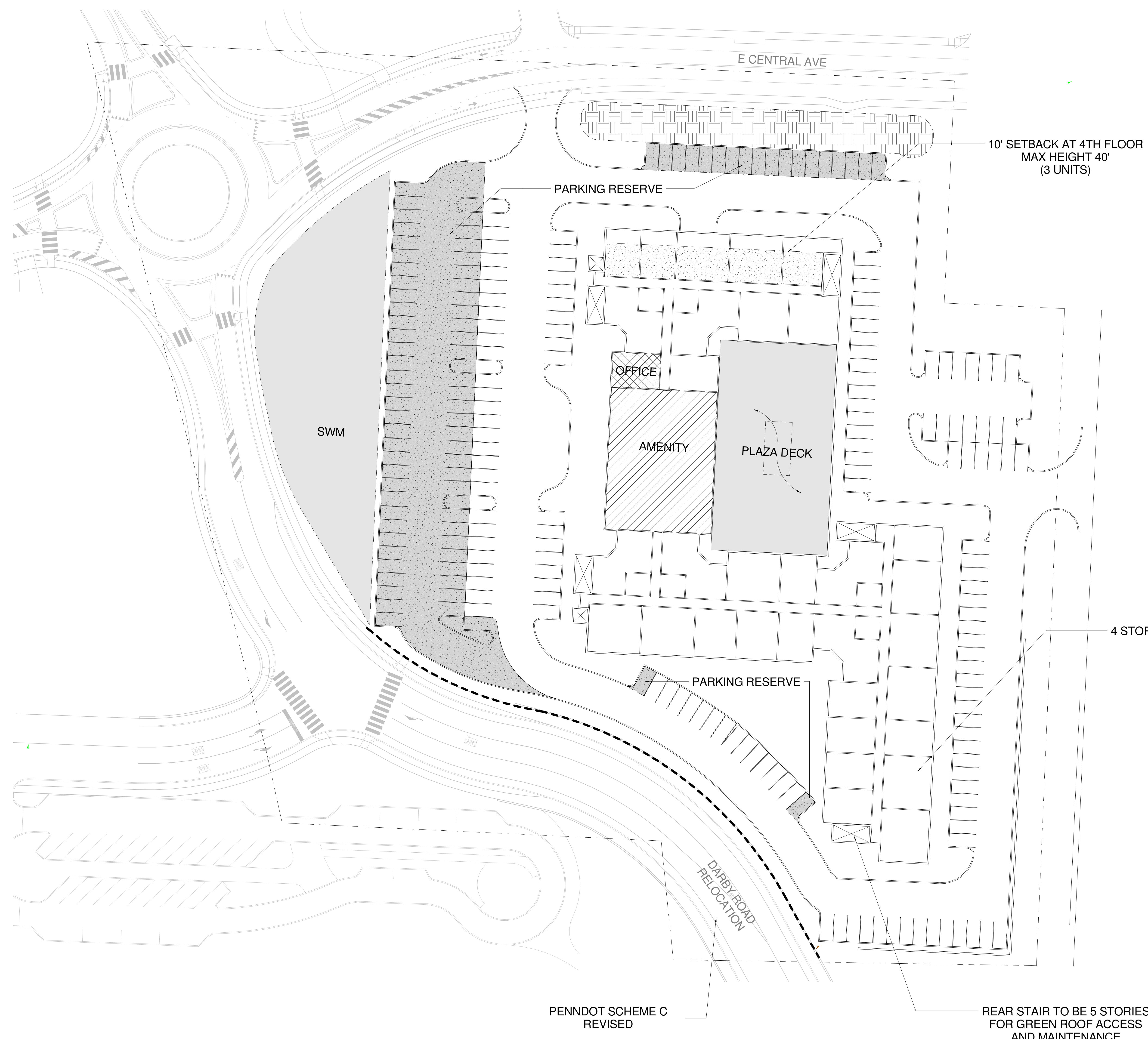
SURFACE PARKING = +/- 135 SPACES  
GARAGE PARKING = +/- 131 SPACES  
RESERVE PARKING = +/- 82 SPACES (24% OF TOTAL PARKING)

TOTAL = +/- 348

**BUILDING FOOTPRINT**

TOTAL = 50,722 SF

BUILDING HEIGHT TO BE 48' EXCEPT WHERE NOTED OTHERWISE.



10' SETBACK AT 4TH FLOOR  
MAX HEIGHT 40'  
(3 UNITS)

PARKING RESERVE

SWM

OFFICE

AMENITY

PLAZA DECK

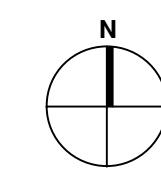
4 STORY

PARKING RESERVE

DARBY ROAD  
RELOCATION

PENNDOT SCHEME C  
REVISED

REAR STAIR TO BE 5 STORIES  
FOR GREEN ROOF ACCESS  
AND MAINTENANCE



**1** SITE PLAN

SCALE: 1" = 30'-0"

